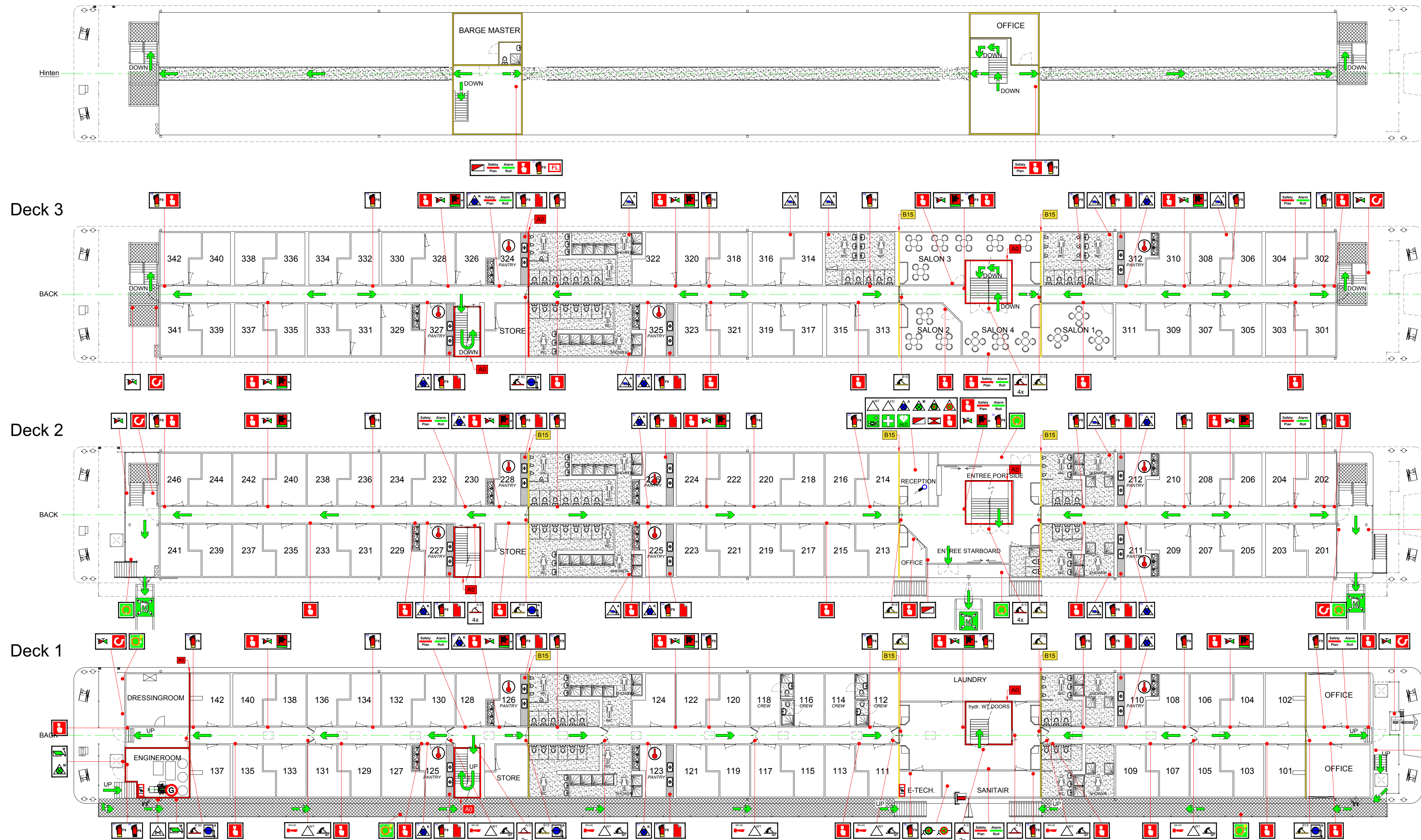
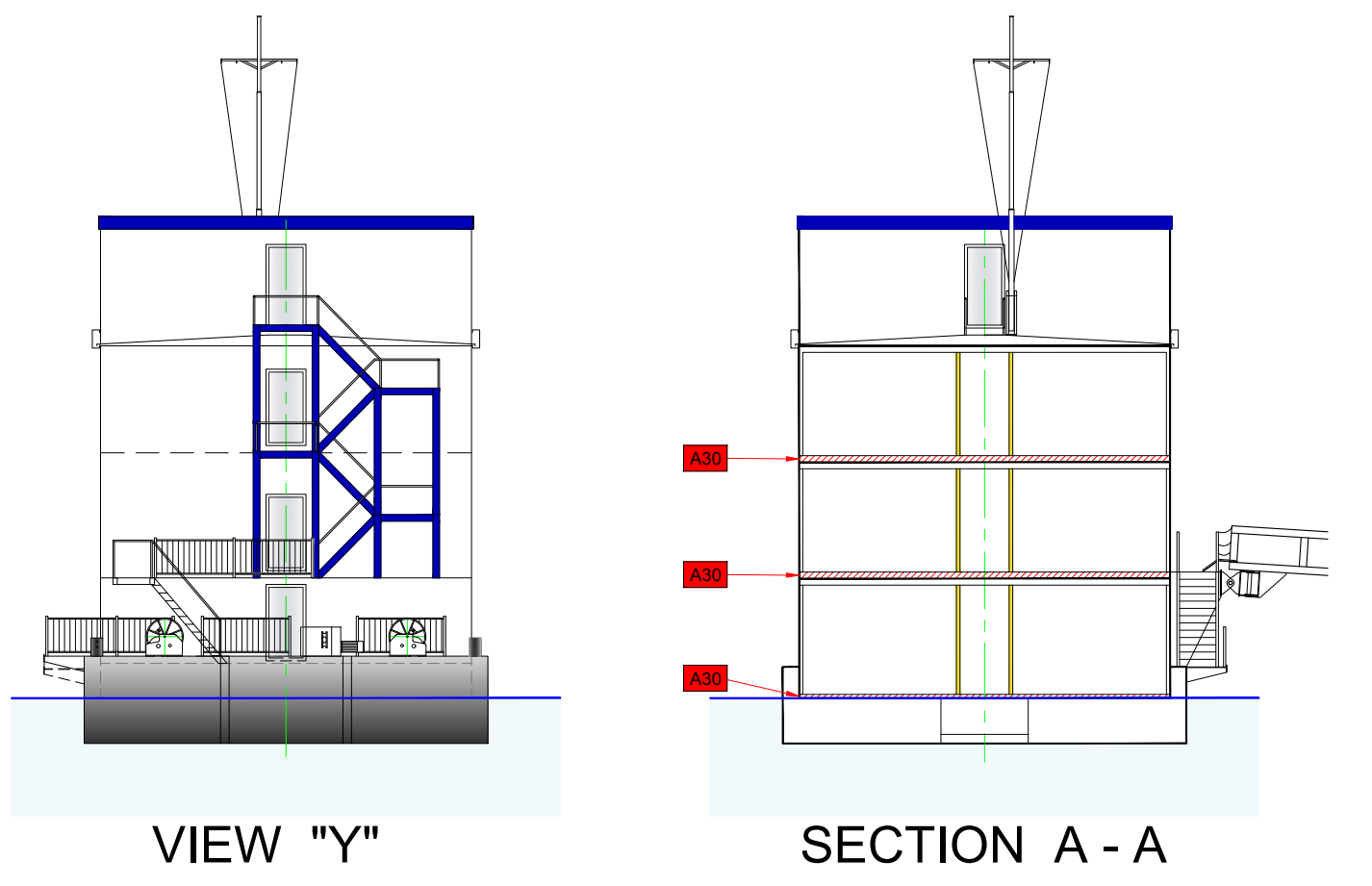
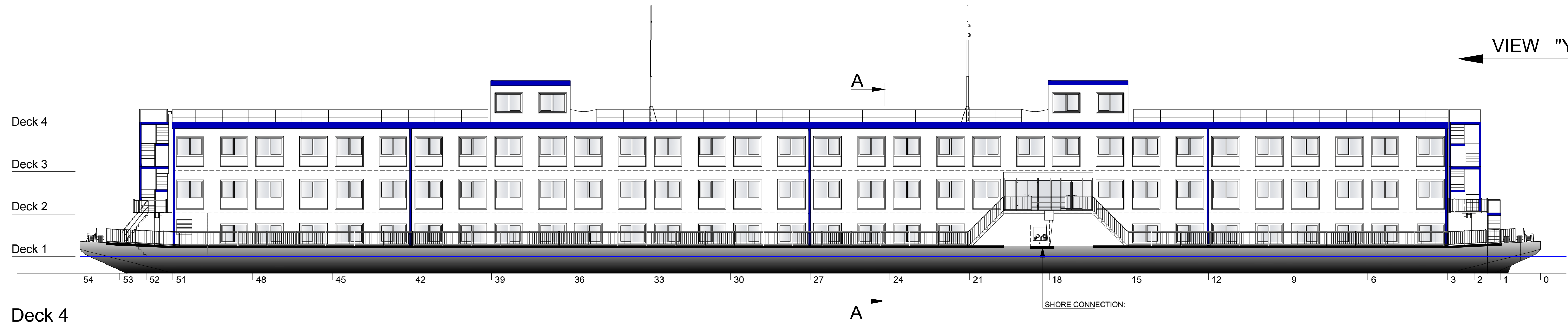
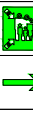

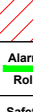






















SICHERHEITSPLAN / SAFETYPLAN HOTELBARGE "TRANSIT"



SICHERHEITSPLAN SAFETYPLAN		DECK 4	DECK 3	DECK 2	DECK 1
SYMBOL	BESCHREIBUNG DESCRIPTION	ANZAHL QUANTITY			
	SAMMELPLATZ (AM LAND) MEETINGPOINT (ON SHORE)	SEE PLAN			
	PRIMÄRE FLUCHTWEG PRIMARY ESCAPE ROUTE	SEE PLAN			
	SEKUNDÄRE FLUCHTWEG SECONDARY ESCAPE ROUTE	SEE PLAN			
	A0-KLASSE TRENNFLACH A0-CLASS FIRE BULKHEAD	SEE PLAN			
	B15-KLASSE TRENNFLACH B15-CLASS FIRE BULKHEAD	SEE PLAN			
	A30-KLASSE BODEN A30-CLASS FLOOR	WHOLE SHIP			
	WARNING FLOOR ALARMFLOR	1	3	3	3
	SICHERHEITSPLAN SAFETYPLAN	2	3	3	3
	RETTUNGSRING MIT LICHT LIFEBUOY WITH LIGHT	4			
	RETTUNGSRING MIT 30m LEINE LIFEBUOY WITH 30m LINE	4			
	BAHRE STRETCHER	1			
	VERBANDKASTEN FIRST-AID BOX	1			
	AED	1			
	FEUERLÖSCHER SCHAUM 9 kg FIRE EXTINGUISHER FOAM 9 kg	2	13	15	16
	FEUERLÖSCHER PUDER 5 kg FIRE EXTINGUISHER POWDER 5 kg	1			
	FEUERLÖSCHDECKE FIRE BLANKET	4	6	4	
	FEUERLÖSCHSCHLAUCH 20m FIRE HOSE 20m	5	5	5	
	FEUERLÖSCHSCHLAUCH 20m FIRE HOSE 20m	2	2	2	
	WASSER HYDRANT FIRE HYDRANT	7	7	7	
	FEUERLÖSCHBILDPUMPE FIREBILGE PUMP	1			
	FERNBEDIENUNG FEUERLÖSCHBILDPUMPE REMOTE CONTROL FIREBILGE PUMP	1			
	NOT FEUERLÖSCHBILDPUMPE EMERGENCY FIREBILGE PUMP	1			
	FERNBEDIENUNG NOT FEUERLÖSCHBILDPUMPE REMOTE CONTROL EMERGENCY FIREBILGE PUMP	1			
	KASTEN MIT FEUERWEHR AUSRÜSTUNG BESTEHEND AUS: LOCKER WITH FIREMAN'S OUTFIT CONSIST OF:	1			
	2 X FEUERSCHUTZLANZUG MIT FEUERSCHUTZHELM PROTECTIVE FIRE SUIT WITH FIREMAN'S HELMET				
	2 X FEUERSCHUTZSTIEFEL UND FEUERSCHUTZHANDSCHÜHE FIREMAN'S BOOTS AND GLOVES				
	2 X TASCHENLAMPE FLASHLIGHT				
	2 X FEUER AKT FIRE AXE				
	2 X ATMENTOESTEL BREATHING APPARATUS				
	2 X BRECHEISEN CROWBAR				
	2 X FEUERFESTE FÜHRUNGSLINIE 20 METER FIRE PROOF SAFETY LINE 20 METER				
SAFETY GUIDANCE SYSTEM - SICHERHEITSELEKTRON - VEILIGHEIDSGLEIDSTESTEM - SYSTEME DE GUIDAGE DE SECURITE LOW LOCATION LIGHTING (LLL): <ul style="list-style-type: none">• AT LOWER PART OF CORRIDOR WALLS GUIDE YOU TO THE EXITS• IM UNTEREN TEIL DES KORRIDORS WÄNDE FÜHRT SIE ZU DEN AUSGÄNGEN• AAN DE ONDERZIJDE VAN DE GANG WAND LEIDT U NAAR DE UITGANG• DANS LA PARTIE INFÉRIEURE DES MURS DU COULOIR VOUS GUIDE VERS LES SORTIES					
REMARKS: <ul style="list-style-type: none">• THE WHOLE SHIP IS PROTECTED BY A AUTOMATIC DETECTION SYSTEM.• THE WHOLE SHIP IS EQUIPPED WITH A PUBLIC ADDRESS SYSTEM TO SOUND THE ALARM IN CASE OF EMERGENCY.• DAS KOMPLETTE SCHIFF IST MONITORED DURCH EIN AUTOMATISCHES ERKENNUNGSSYSTEM.• DAS KOMPLETTE SCHIFF IS MIT LAUTSPRECHER AUSGERÜSTET FÜR DURCHGANG VON ALARM BEI NOTFÄLLE.					
STAMP:					

SICHERHEITSPLAN SAFETYPLAN		DECK 3	DECK 2	DECK 1
SYMBOL	BESCHREIBUNG DESCRIPTION	ANZAHL QUANTITY		
	STILLER ALARM MELDER SILENT ALARM CALL POINT	2	15	15
	HITZE DETECTOR HEAT DETECTOR	4	6	4
	ALARM TAFEL ALARM PANEL	1	1	
	ALARM TAFEL ALARM PANEL	FEUER FIRE		
	ALARM TAFEL ALARM PANEL	GENERAL ALARM + STILLER GENERAL ALARM + SILENT		
	HORN BILGE ALARM			7
	FERNBEDIENUNG FEUER TÜR REMOTE CONTROL FIRE DOOR	1	1	
	A0-KLASSE AUTOMATISCHE FEUER TÜR A0-CLASS SELF CLOSING FIRE DOOR	1	4	3
	A0-KLASSE FEUER TÜR A0-CLASS FIRE DOOR			4
	B15-KLASSE AUTOMATISCHE FEUER TÜR B15-CLASS SELF CLOSING FIRE DOOR	2	3	4
	FERN BEDIENUNG WASSERDICHTE TÜR REMOTE CONTROL WATERTIGHT DOOR			7
	AUTOMATISCHE WASSERDICHT TÜR SELF CLOSING WATERTIGHT DOOR			7
	NOT SCHALT TAFEL EMERGENCY SWITCHBOARD			1
	NOTGENERATOR EMERGENCY GENERATOR			1
	INTERNATIONALER LANDANSCHLUSS: - ABWASSER - FRÖHNSCHER - FEUERWASSER - ELEKTROWASSER			1
	INTERNATIONALER SHORE CONNECTION: - GROUND - DRINK AND TOTE - FIRE PROTECTION			1
	NOTACCU EMERGENCY ACCU			
	S.O.S. BRENNSTOFF VENTIL S.O.S. FUEL OIL VALVE			1
	FEUERKLAPPE FIRE DAMPER			2
	M-MASCHINENRAUM / MACHINERY SPACES			
	FERNBEDIENUNG FEUERKLAPPE REMOTE CONTROL FIRE DAMPER	6	3	
	A4-KOMMUNIKATION AUTOMATISCHE FEUERKLAPPE (ÜBER DECKE) AUTOMATIC FIRE DAMPER (ABOVE CEILING)	1	1	3
	NOTSTOPPER VENTILATION REMOTE SHUT-OFF			1
	M-MASCHINENRAUM / MACHINERY SPACES			
	NOTSTOPPER VENTILATION REMOTE SHUT-OFF			1
	A4-KOMMUNIKATION VENTILATION REMOTE SHUT-OFF			1
	NOTSTOPPER VENTILATION REMOTE SHUT-OFF	4	6	4
	WASSER TÜR REMOTE SHUT-OFF KÜCHTCHEN			
	INFORMATIONEN LAUTSPRECHER SYSTEM PUBLIC ADDRESS / SOUND SYSTEM	1		
IN JEDER FAHRGASTKABINE / IN EVERY PASSENGER CABIN:				
	STILLER ALARM MELDER SILENT ALARM CALL POINT			1
	HITZE-RAUCH DETECTOR HEAT-SMOKE DETECTOR			1
	LAUTSPRECHER LOUDSPEAKER			1
	SICHERHEITSHINWEISE SAFETYINSTRUCTIONS			1
	B15-KLASSE FEUER TÜR B15-CLASS FIRE DOOR			1
	B15-KLASSE WANDEN B15-CLASS WALLS			
	A30-KLASSE BODEN A30-CLASS FLOOR			
IN JEDER BESATZUNG KABINE / IN EVERY CREW CABIN:				
	STILLER ALARM MELDER SILENT ALARM CALL POINT			1
	HITZE-RAUCH DETECTOR HEAT-SMOKE DETECTOR			1
	LAUTSPRECHER LOUDSPEAKER			1
	B15-KLASSE WANDEN B15-CLASS WALLS			1
	SICHERHEITSHINWEISE SAFETYINSTRUCTIONS			1
	WARNUNG ROLLE ALARMROLLE			1
	B15-KLASSE FEUER TÜR B15-CLASS FIRE DOOR			1

