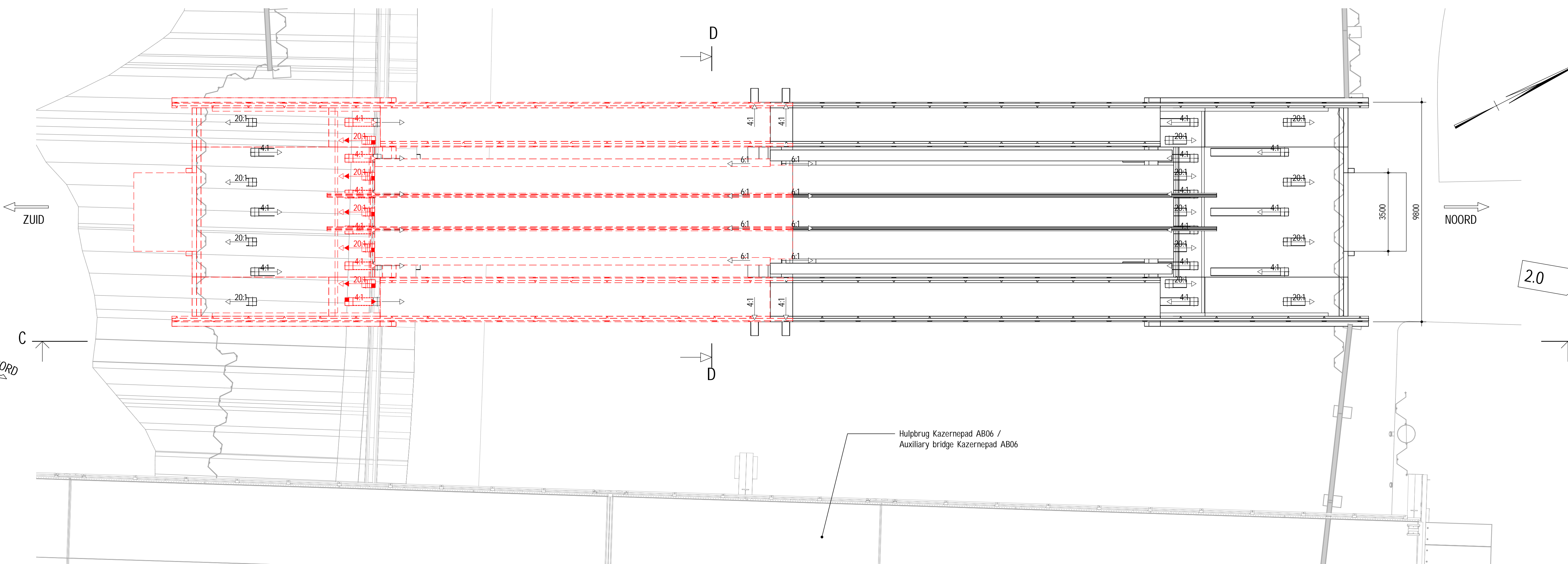
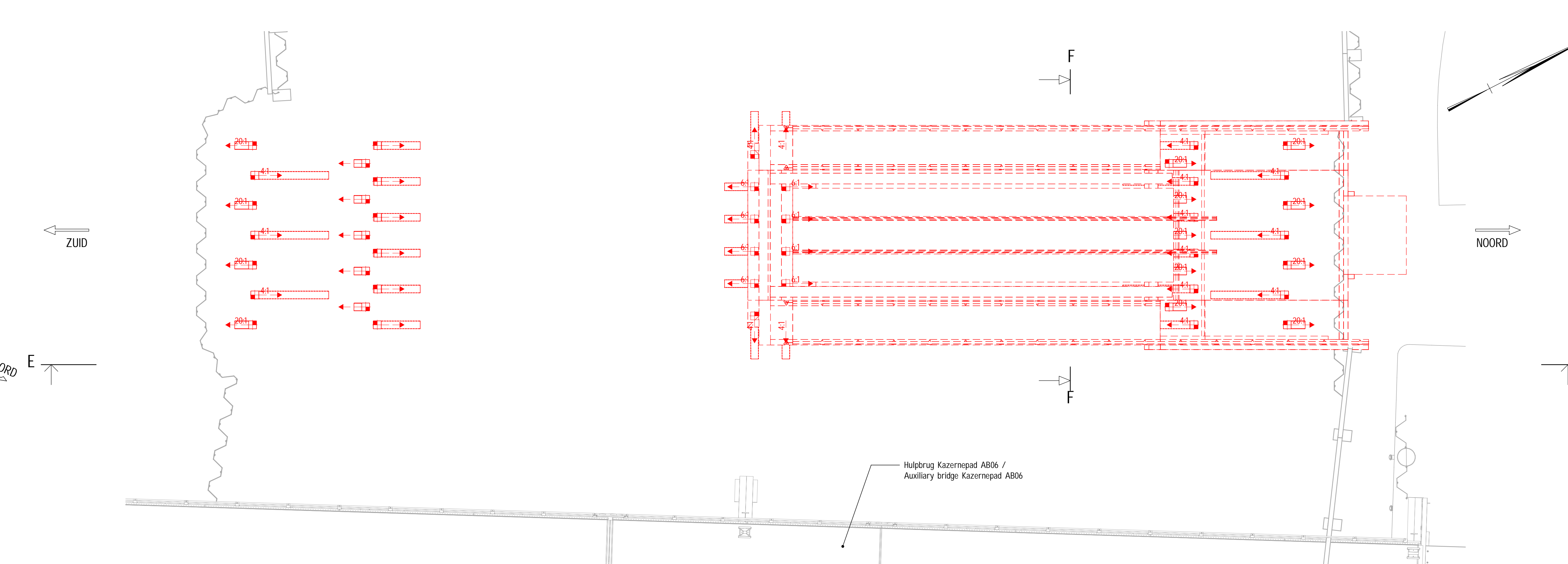


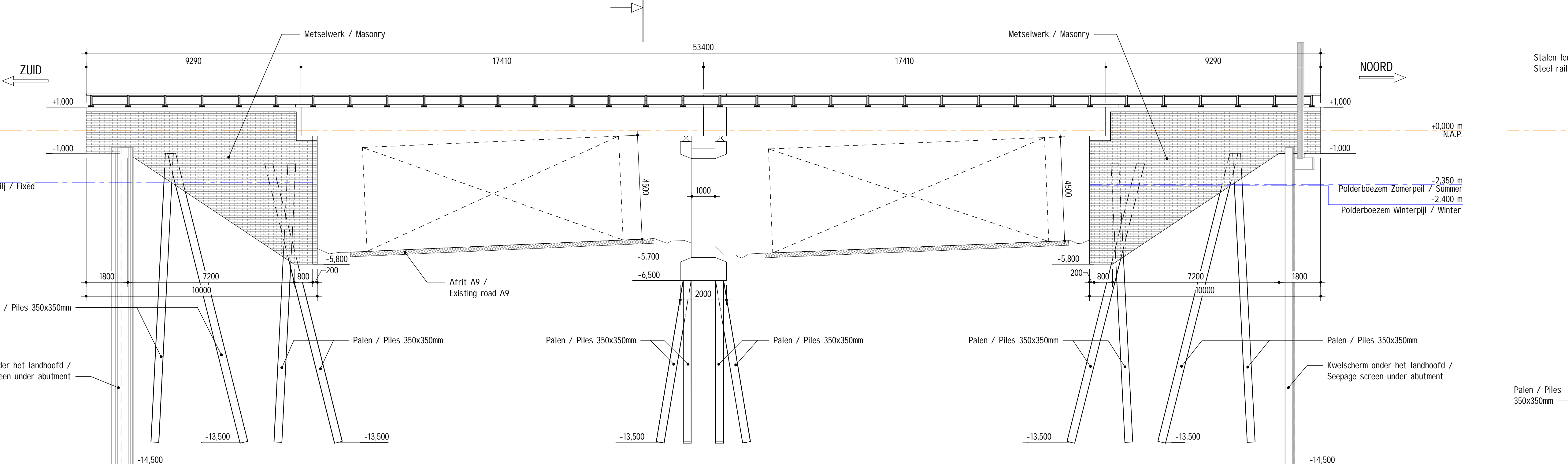
Bestaand viaduct - Bovenaanzicht / Existing viaduct - Top view
 schaal: 1 : 100



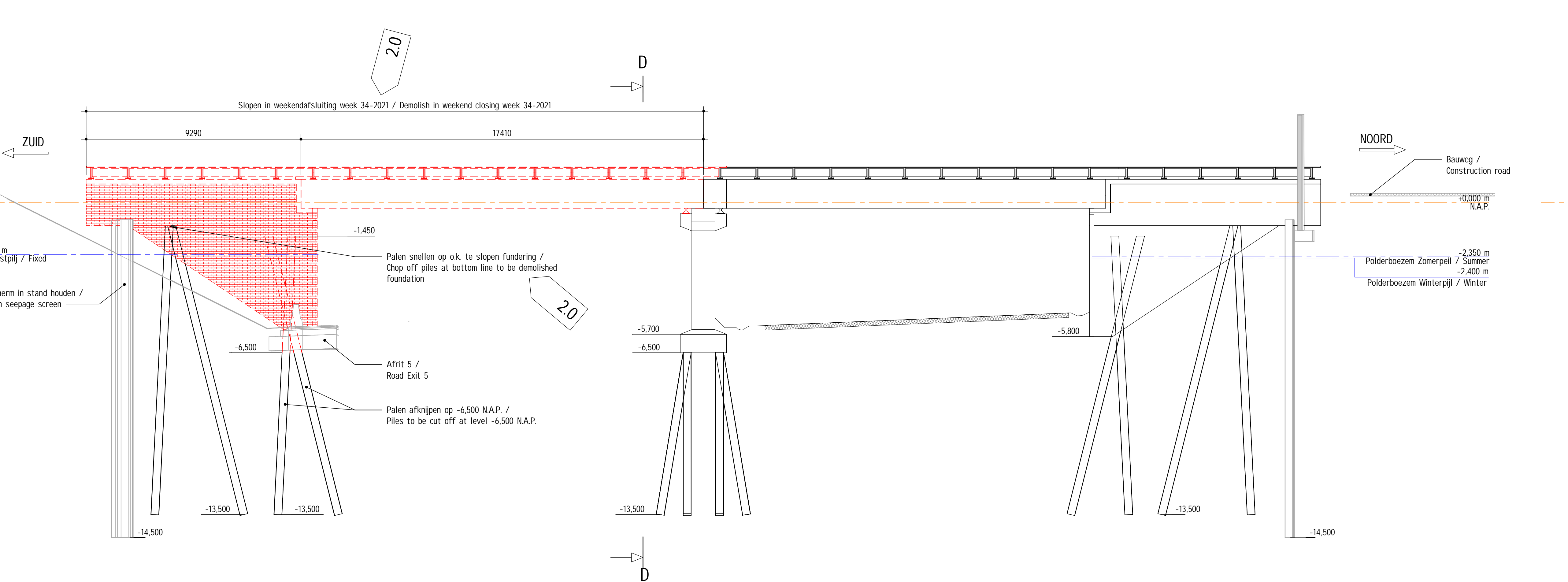
Sloop - Subfase 1 - Bovenaanzicht / Scope of demolition - Subphase 1 - Top view
 schaal: 1 : 100



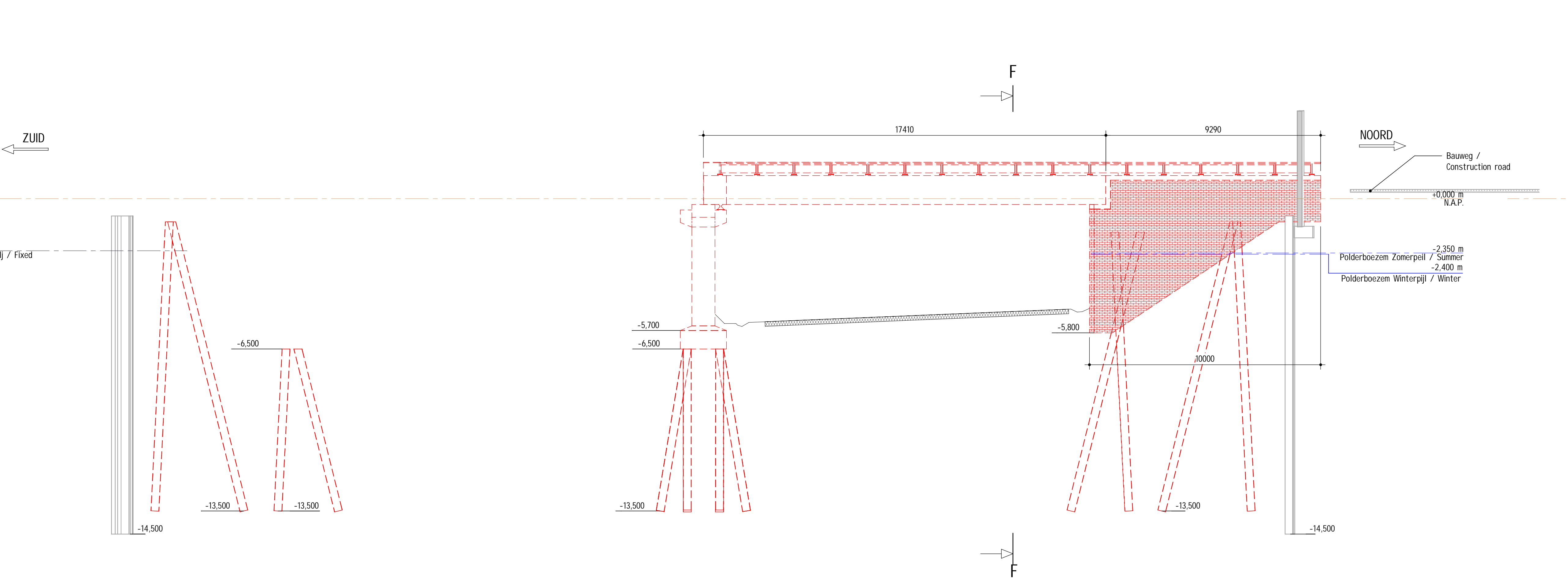
Sloop - Subfase 2 - Bovenaanzicht / Scope of demolition - Subphase 2 - Top view
 schaal: 1 : 100



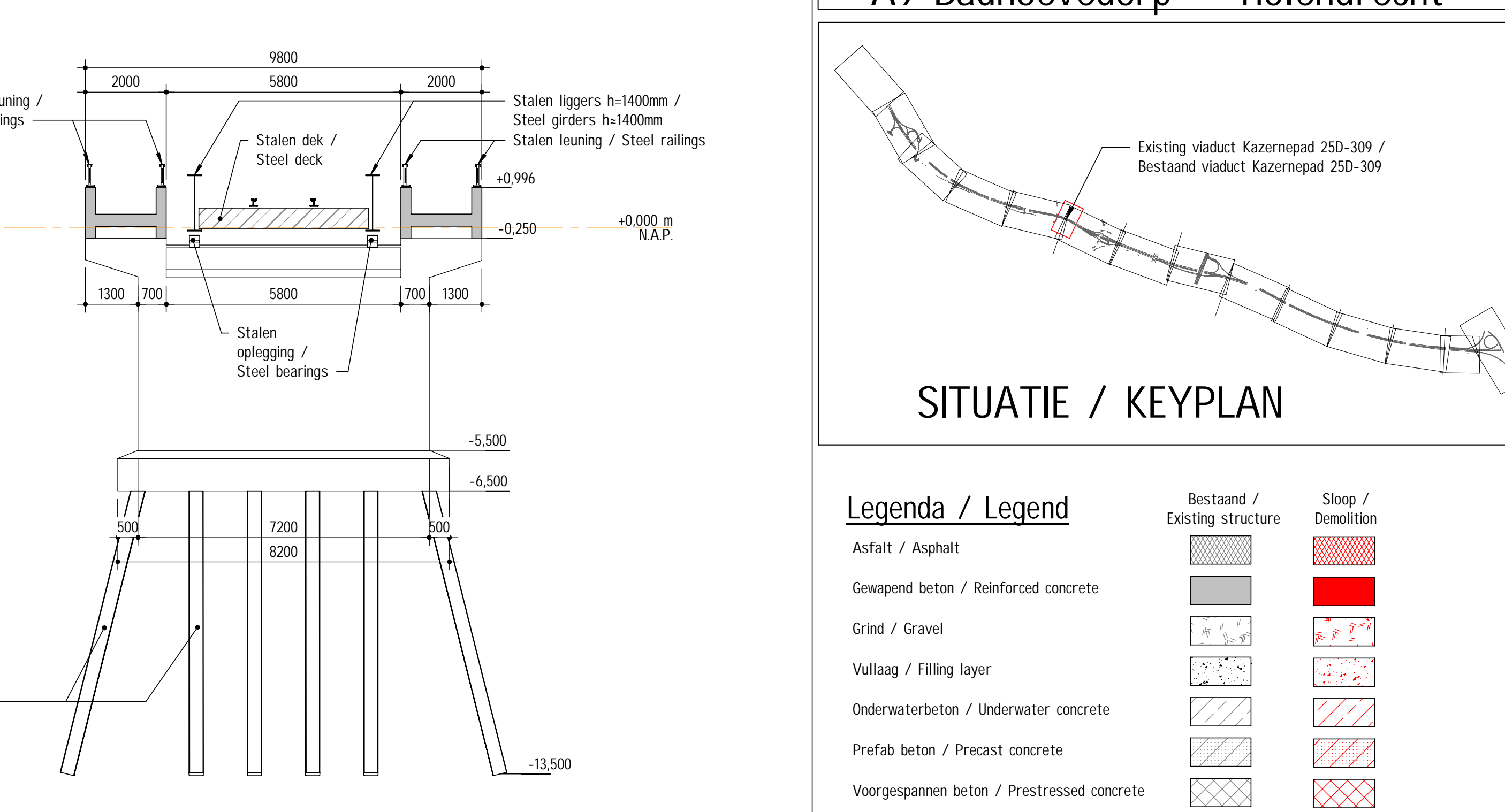
land viaduct - Vooraanzicht A-A / Existing structure - Front view A-A
1 : 100



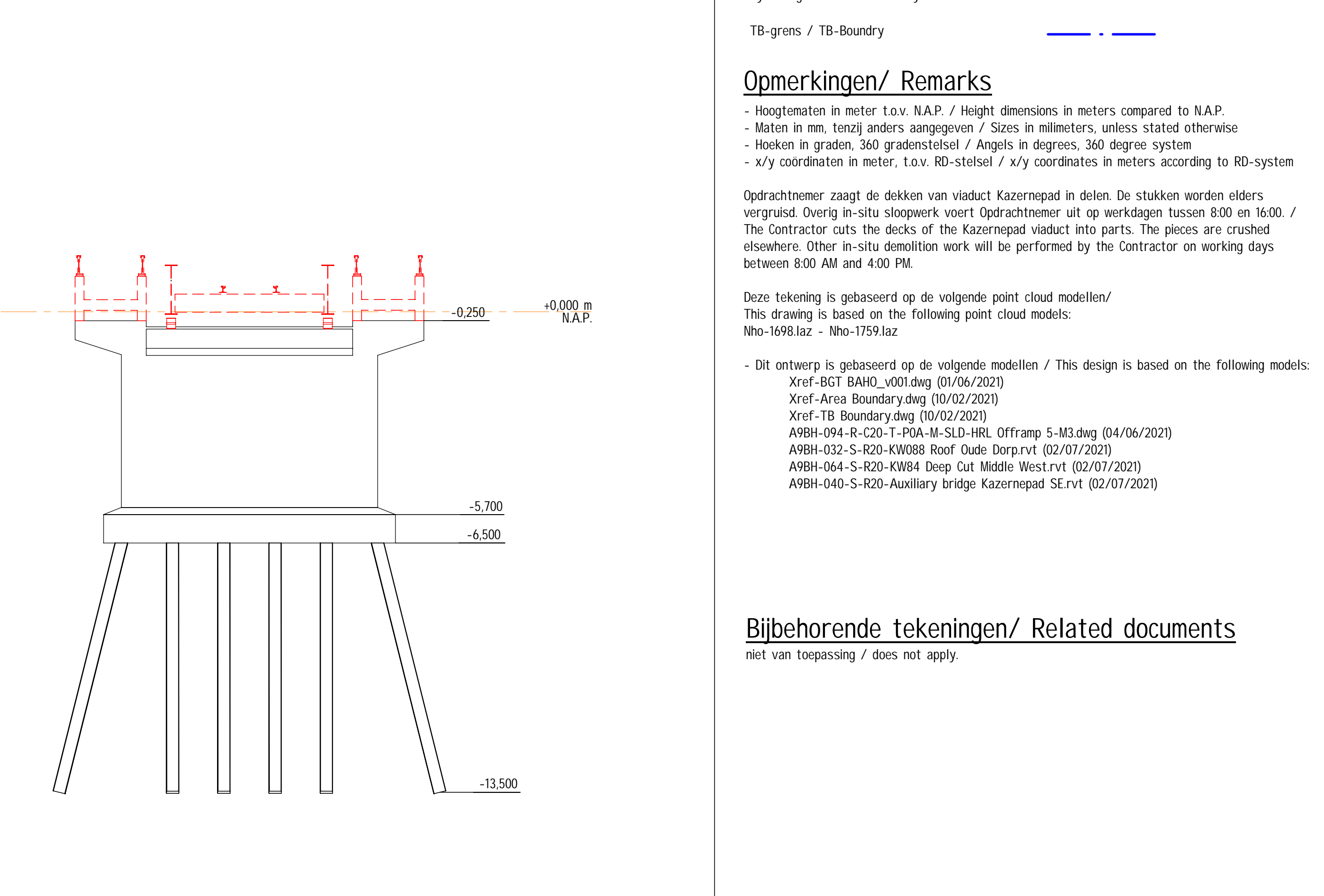
Top - Subfase 1 - Vooraanzicht C-C / Scope of demolition - Subphase 1 - Front view C-C



Op - Subfase 2 - Vooraanzicht E-E / Scope of demolition - Subfase 2 - Front view E-E



rsdoorsnede B-B / Cross section B-B
1 : 100



rsdoorsnede D-D / Cross section D-D
1 : 100

orende tekeningen/ Related documents
 epassing / does not apply.

A9_Revision Schedule						
	Onscrey/ing	Opuslur	Gecondoord	Geulardoord	Vijgig	
021	First draft (check print)	MQ	STH			
021	Second draft	MQ	STH			
021	Third draft	MQ	STH/RFR			
021	Definitief / Final	MQ	STH	RFR	WMI	JVK
021	Internal review remarks processed	MQ	H2U	#	WMI	Cic JLE

		A9 Badhoevedorp - Holendrecht	
		Projectnummer	30268539
		Documentaart	Tekening / Drawing
		Schaal	1:100
oorvaaduct Kazernepad 250-309		Formaat	2100 x 841
duct Kazernepad 250-309		Blad	1 van 1
eg / Demolishing drawing		Status	Definitief / Final
04.06		Versie	2.0

A9BH-M-0102-S-BR-DW-25D-309-F01