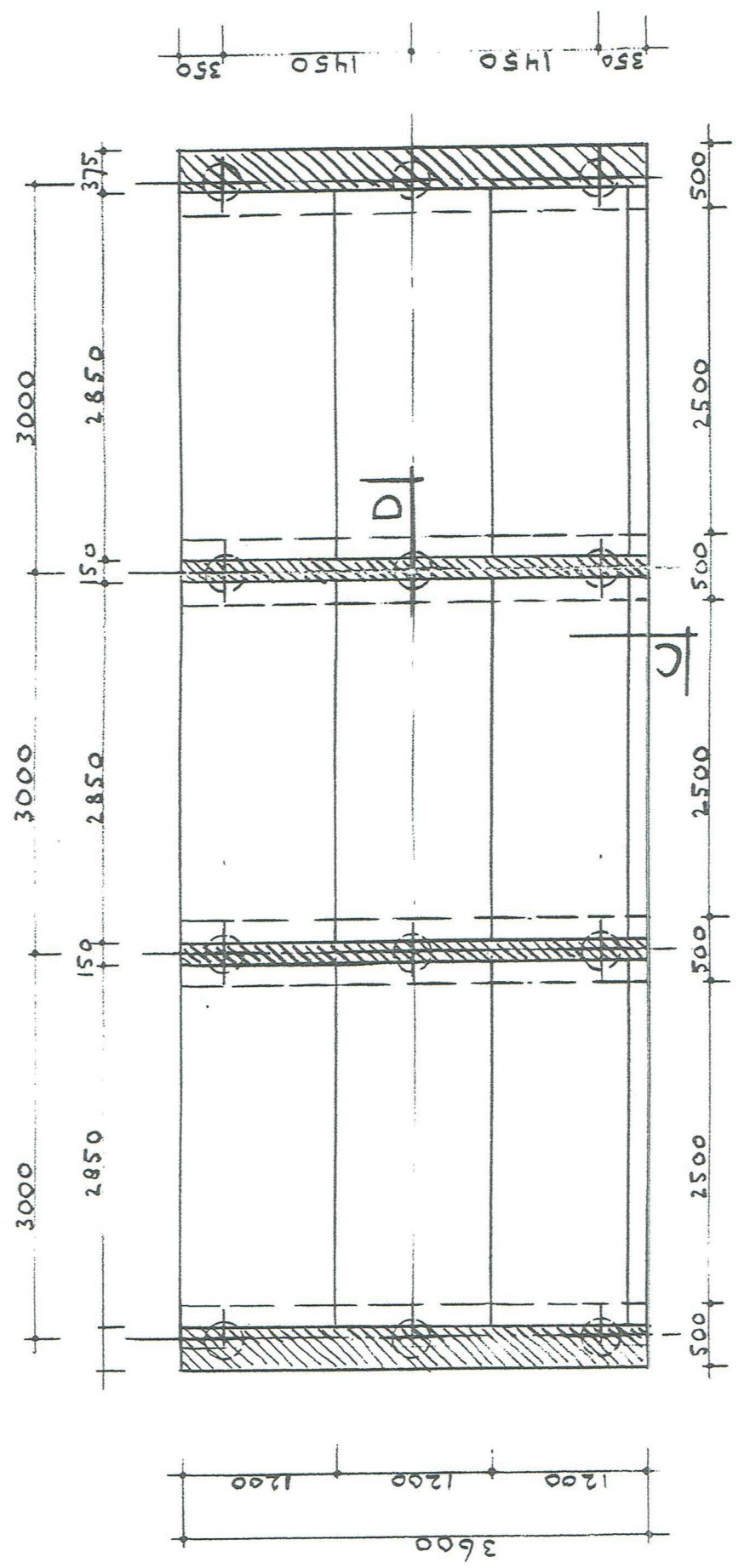
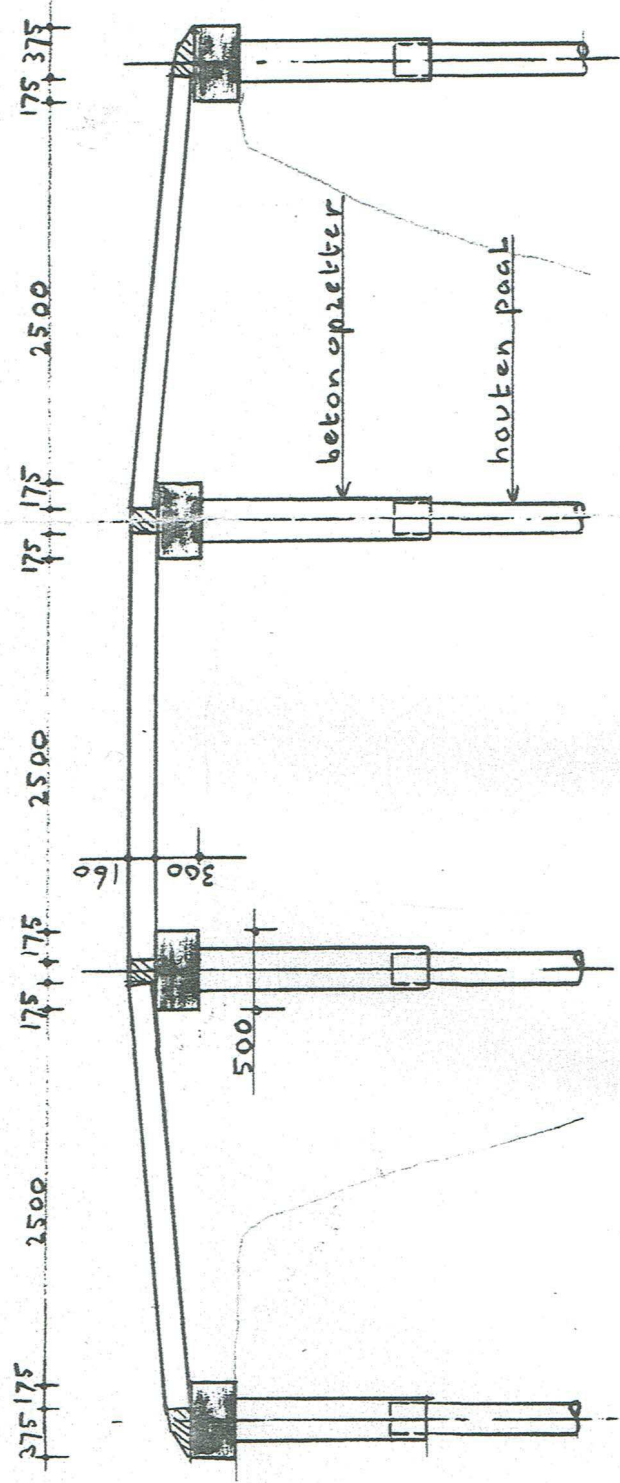


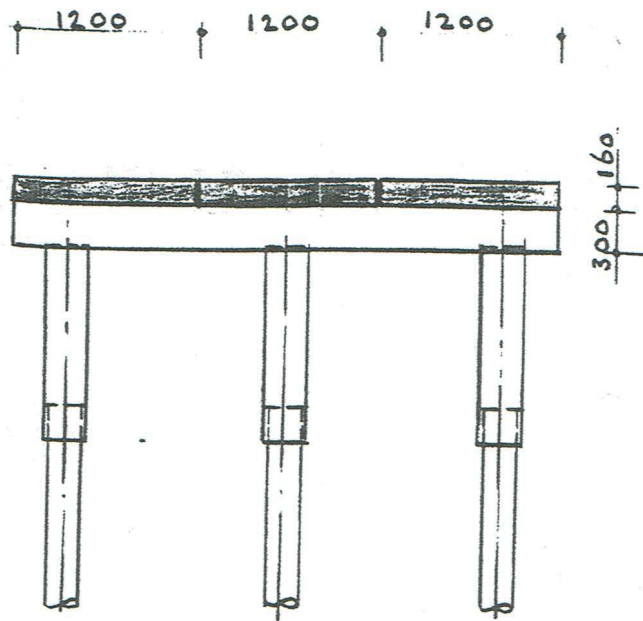
A3-16



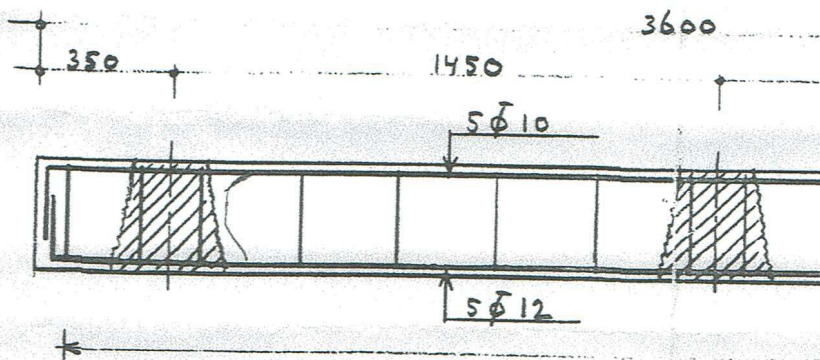
schema: brua



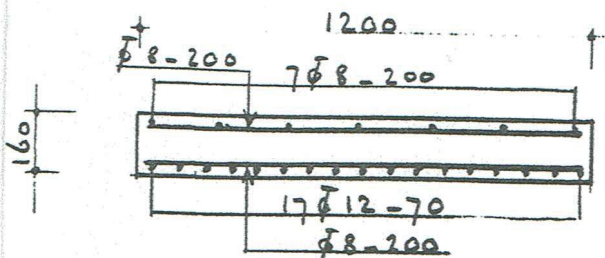
Langsdoorsnede



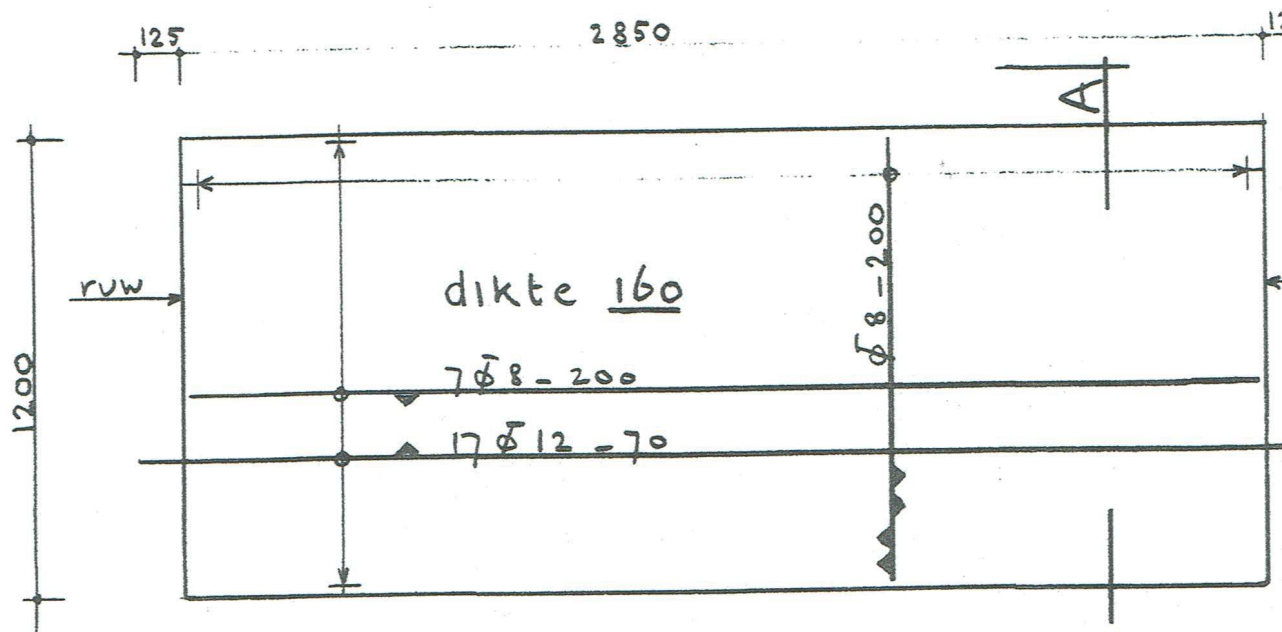
dwarsdoorsnede



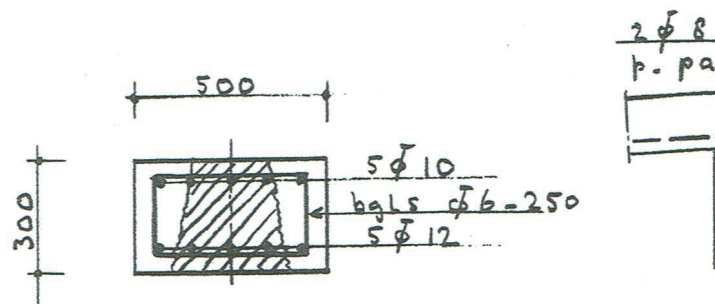
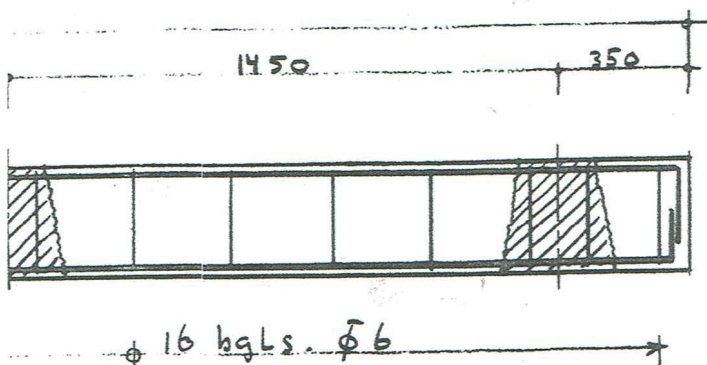
baalk



dsn. A



brugdek plaat



ds

BETON

kwat. B35, mil.kl.3

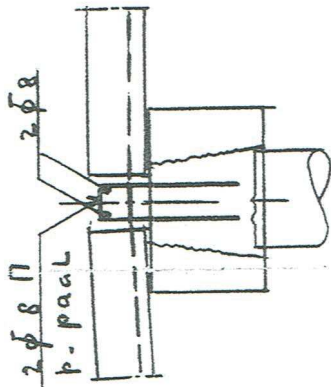
wapening : FeB 500

dekking : platen 30 mm

balk 35 mm

uitwendige hoeken vellingk. 12 mm:

 in het werk aanstorten



PALEN



houten palen met betonoplanger

lengte te bepalen n.a.v. sondering

rekenwaarde max. belasting ca. 130 kN

dsn. D

GESCHIKT VOOR KLASSE 30 V.O.S.B. '63

ontwerp en uitvoering : W. Verburg - Nieuwerbrug

| | |
|--|-----------------------------------|
| <p>werk :</p> <p>LANDBOUWBRUG</p> | <p>wijz : 20/2/99</p> |
| <p>opdr.-gever :</p> | <p>dat : 24/10/97</p> |
| <p>onderwerp :</p> <p>PALENPLAN EN BETONCONSTRUCTIE</p> | <p>schaal : 1:50/20</p> |
| <p>CIVIEL- EN BOUWKUNDIG ADVIESBURO VAN SCHAIK</p> | <p>formaat : 840/297</p> |
| <p>Polderbaan 2 3446 DB Woerden</p> | <p>telefoon : 0348 - 418350</p> |
| | <p>werk nr :</p> <p>tek. nr :</p> |