

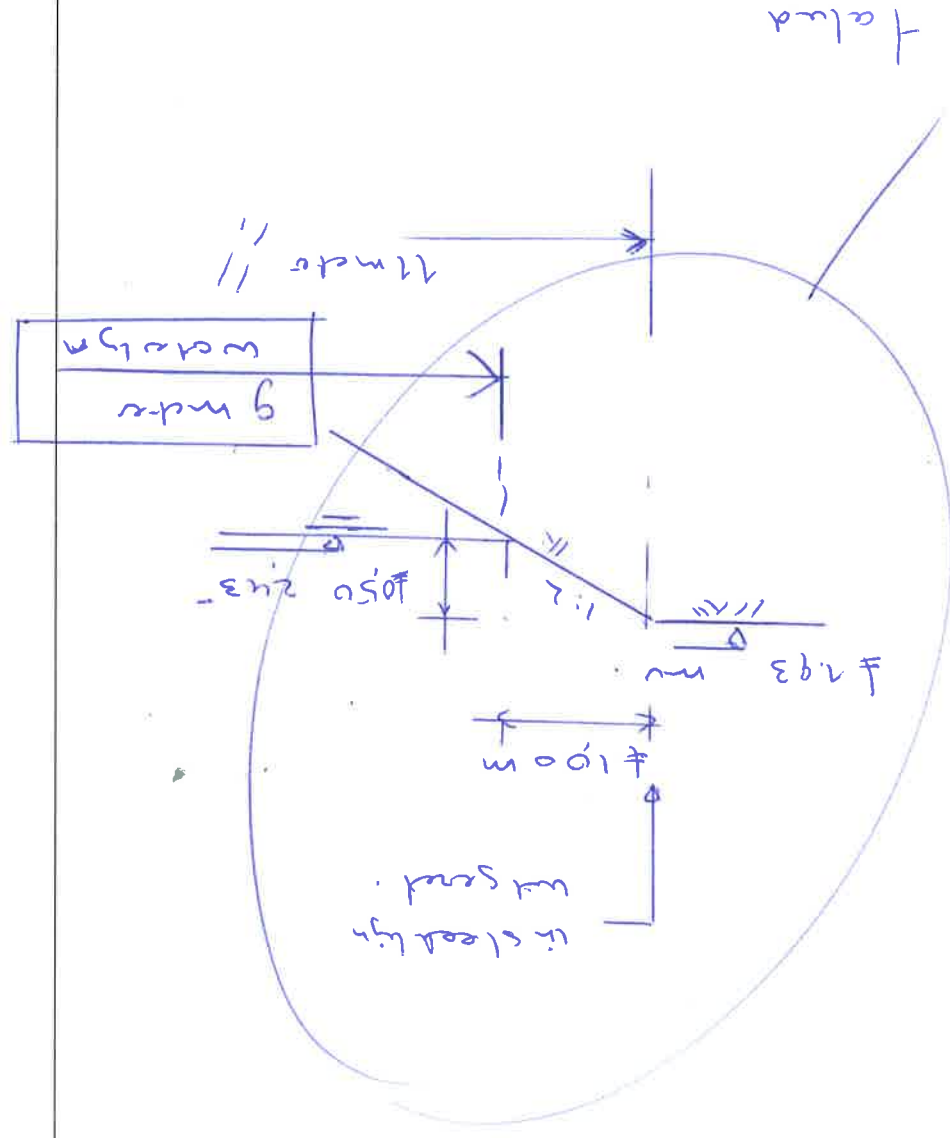
Besides m^3 water compressible

A.	f	160 m ²
B.	f	115 m ²
C.	f	250 m ²
D.	f	100 m ²
E.	f	800 m ²

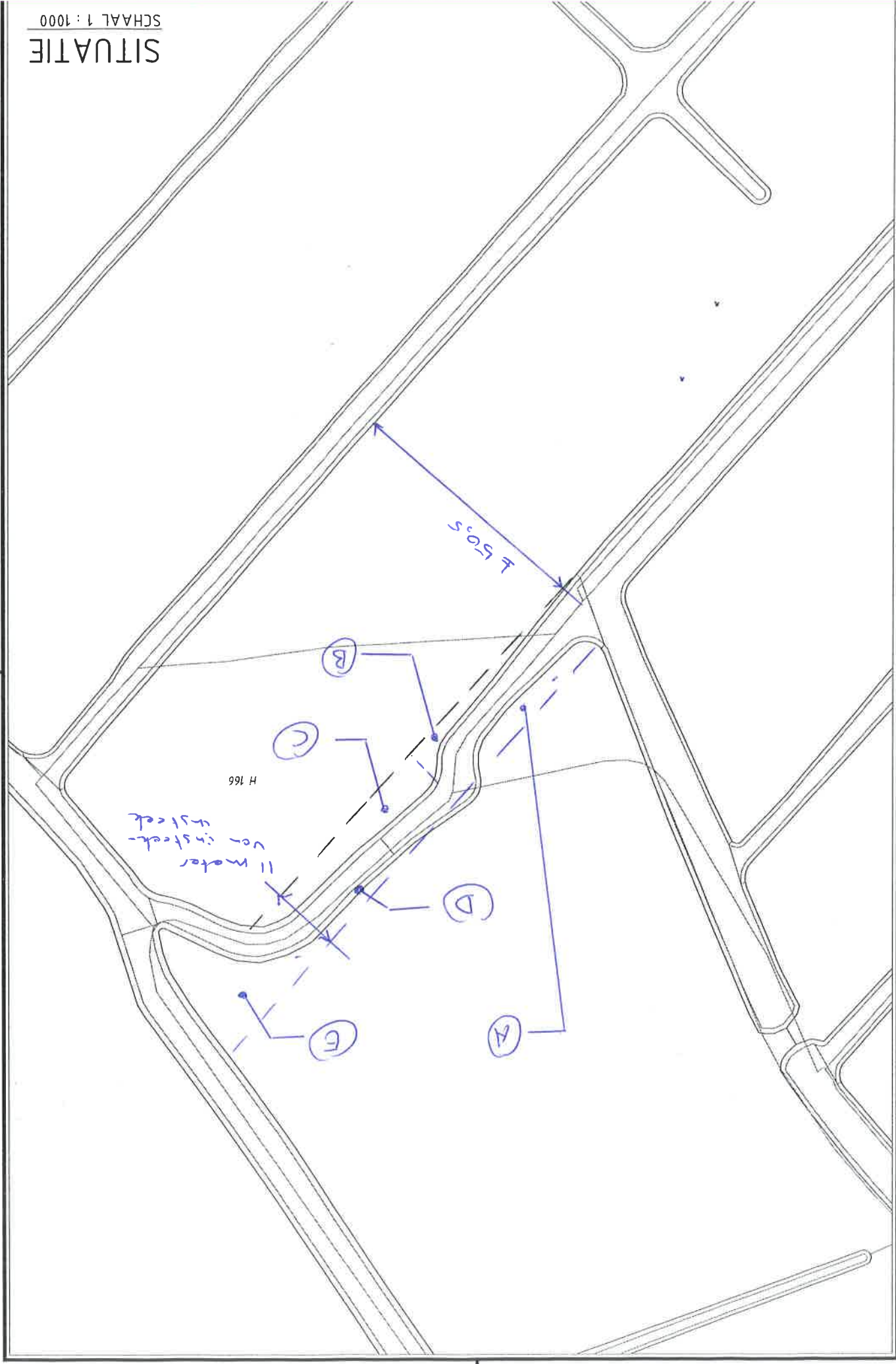

f 925 m²

minus 95 + 110 m² - 200 m²

f 925 m²



28. März 2019
R. Kosselke



SITUATIE

SCHAAL 1 : 1000