

Overzicht e-mail document en bijlagen

De eerstvolgende pagina('s) bevatten de inhoud van het e-mail document met naam: **EU Regions Week session_thank you!_clean.msg**

Daarnaast bevat deze e-mail bijlagen, in het onderstaande tabel staan de namen van de bijlagen en of ze meegenomen zijn in het huidige document.

| Naam van bijlage | Aanwezig in dit bestand |
|--------------------------------|-------------------------|
| Session_EUREGIONS_MERGED_.pptx | Ja |

From 5.1.2e 5.1.2e <5.1.2e@phrenos.eu>
Subject **EU Regions Week session_thank you!**
To 5.1.2e 5.1.2e <5.1.2e@nijmegen.nl>
Date October 18, 2023, 3:08:36 PM UTC

Microsoft Exchange Server;converted from html;

5.1.2e 5.1.2e,

On behalf of the European Green Capital Secretariat, I wanted to extend a warm thank you for your contribution during the session “European Green Capitals: unlocking the power of indicators for the circular future of cities” at the EU Regions Week. It was a pleasure to have you as a speaker.
I have attached to this email the PPT presentation, providing you with easy access to retrieve the information given during the session.

Once again, thank you for taking the time to join us and sharing your valuable insights.
We look forward to the possibility of working with you again in the future.

Best regards,

5.1.2e 5.1.2e

EU Green Capital & Leaf Secretariat



5.1.2e



[European Green Capital Website](#)



[European Green Leaf Website](#)



Bijlage:

Session_EUREGIONS_MERGED_.pptx



#EUGreenLeaf

#EUGreenCapital

European Green Capitals: unlocking the power of indicators for the circular future of cities

Brussels, 12 October 2023



Agenda

12.10.23



| | |
|---------------|---|
| 09:30 - 09:35 | Welcoming words and short introduction by 5.1.2e 5.1.2e , Global Director Energy Transition, EGCL Secretariat |
| 09:35 - 09:50 | Presentation by 5.1.2e 5.1.2e , Policy Officer, European Commission, DG GROW |
| 09:50 - 10:05 | Presentation by 5.1.2e European Green Capital 2023 Tallinn and Q&A |
| 10:05 - 10:20 | Presentation by 5.1.2e 5.1.2e , Deputy Mayor, Municipality Nijmegen and Q&A |
| 10:20 - 10:45 | Discussions at the tables |
| 10:45 - 11:00 | Plenary feedback with 5.1.2e |

Session moderated by

5.1.2e

5.1.2e



EU policies for a more circular construction industry

European Green Capitals: unlocking the power of indicators for the circular future of cities, 12 October 2021

5.1.2e

3 Policy Officer, DG
GROW Construction Unit

Policy context

Political imperative

European
leadership



Changing
legislative and
geopolitical
context

Environmental
impacts of
construction



Opportunities:
renovation wave,
shift to circular
economy

The EU construction industry ecosystem

- 9.6% of EU Gross Value Added (EUR 1 158 billion)
- 25 million jobs, 5.3 million firms
- 37.5% of waste generated (2020)
- Half of resources extracted
- Buildings: 40% of energy consumed



Transition pathway for Construction

Transition Pathway (March 2023):
<https://ec.europa.eu/docsroom/documents/53854>

- Co-created with industry, Member States and other stakeholders
- A vision for the green and digital transition
- Recommendations of concrete action

Call for new commitments aligning with the Transition Pathway:
https://ec.europa.eu/eusurvey/runner/TransitionPathwayConstruction_Commitments

Construction Products Regulation revision



Unlock growth
and jobs potential



Improve
competitiveness



Greening of
manufacturing



Sustainable built
environment



Circular economy



Digitalisation of
construction

CPR review:
<https://europa.eu/!Dy69pr>

CPR acquis preparatory work

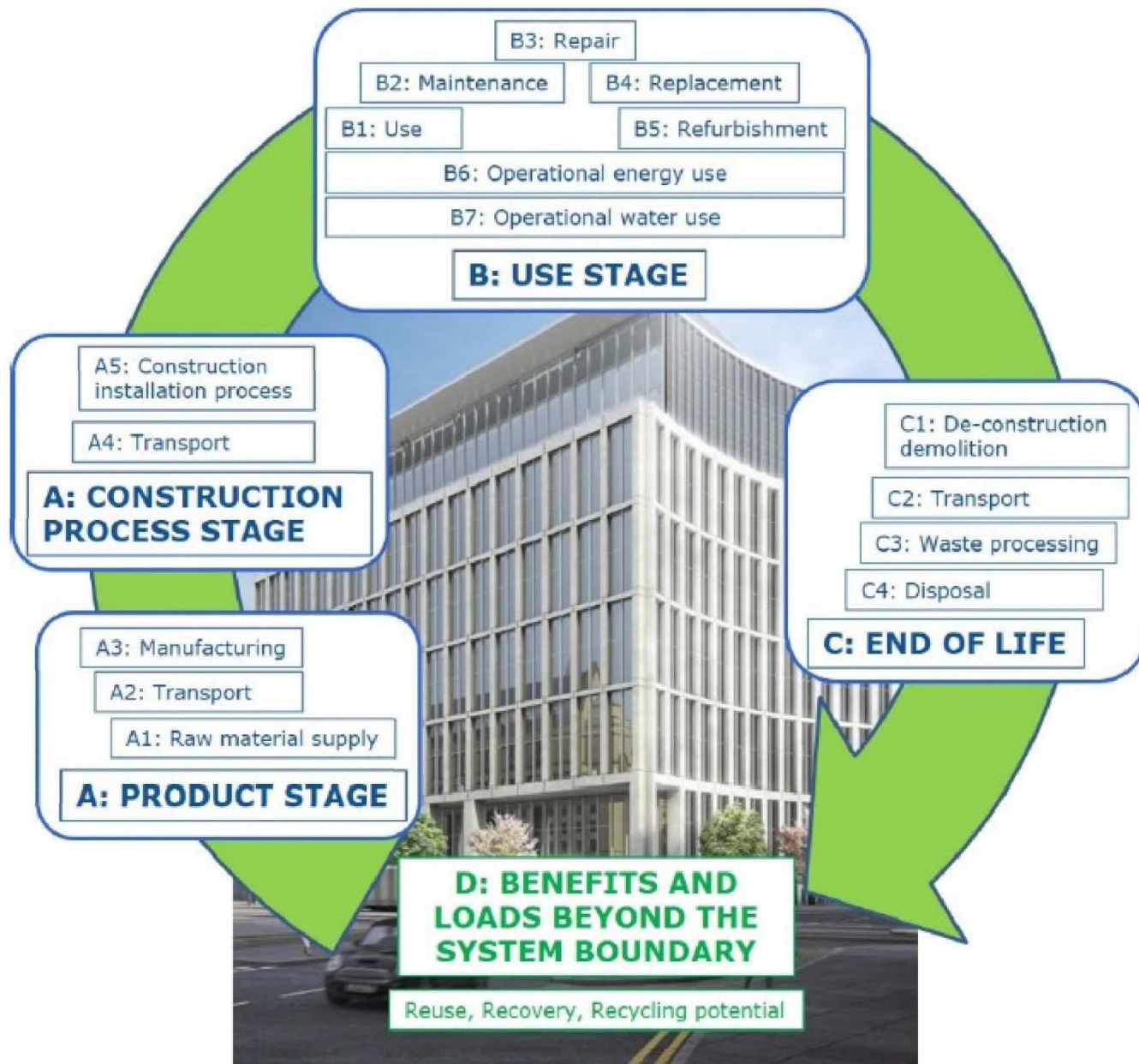
Implemented by harmonised standards to be cited in the Official Journal

Level playing field for construction products (no barriers to trade)

Regulatory consistency to guarantee healthy internal market

| | | | | | | |
|------|----|--------------------------------|----|---------------------------|----|-----------------------|
| 2021 | 1 | Precast concrete products | 13 | Floorings | 25 | Gypsum |
| 2021 | 2 | Structural metallic products | 14 | ETICs | 26 | Anchors and fasteners |
| 2022 | 3 | Reinforcing prestressing steel | 15 | Curtain walling | 27 | Membranes |
| 2022 | 4 | Doors, windows and shutters | 16 | Wood based panels | 28 | Glass |
| 2023 | 5 | Cement | 17 | Structural bearings | 29 | Geotextiles |
| 2023 | 6 | Thermal insulating products | 18 | Kits and assemblies | 30 | Sanitary appliances |
| ... | 7 | Structural timber products | 19 | Wall and ceiling finishes | 31 | Pipes and tanks |
| | 8 | Concrete, mortar and grout | 20 | Space heating appliances | 32 | Cables |
| | 9 | Masonry | 21 | Roof coverings | 33 | Chimneys |
| | 10 | Aggregates | 22 | Circulation fixtures | 34 | Sealants |
| | 11 | Fixed firefighting equipment | 23 | Waste water disposal | | |
| | 12 | Road construction products | 24 | Adhesives | | |

Whole life cycle GHG emissions of buildings



- Few EU level statistics & data
- New policy area
- Little experience in some Member States and industry actors
- Complex issue requiring joined up thinking
- EU Roadmap to be presented in Staff Working Document (spring 2024)

The stages in a building life cycle, based on EN 15978.
Source: JRC 2021 Level(s)

Level(s) framework for sustainable buildings

A basis for
measuring and
reporting
environmental
performance



Level(s) appearing
in legislation (e.g.
EED, EU Taxonomy,
EPBD)

16 indicators,
including life cycle
GHG emissions



Level(s) website:
https://environment.ec.europa.eu/topics/circular-economy/levels_en

The EU Taxonomy is a key tool to help reorient private capital towards the green transition

The Taxonomy is a classification system of science-based criteria for economic activities to substantially contribute to environmental objectives

Three basic conditions

1

Substantially Contribute
to one environmental objective

2

Do No Significant Harm
to any other objective

3

Minimum safeguards
e.g. human rights, corruption

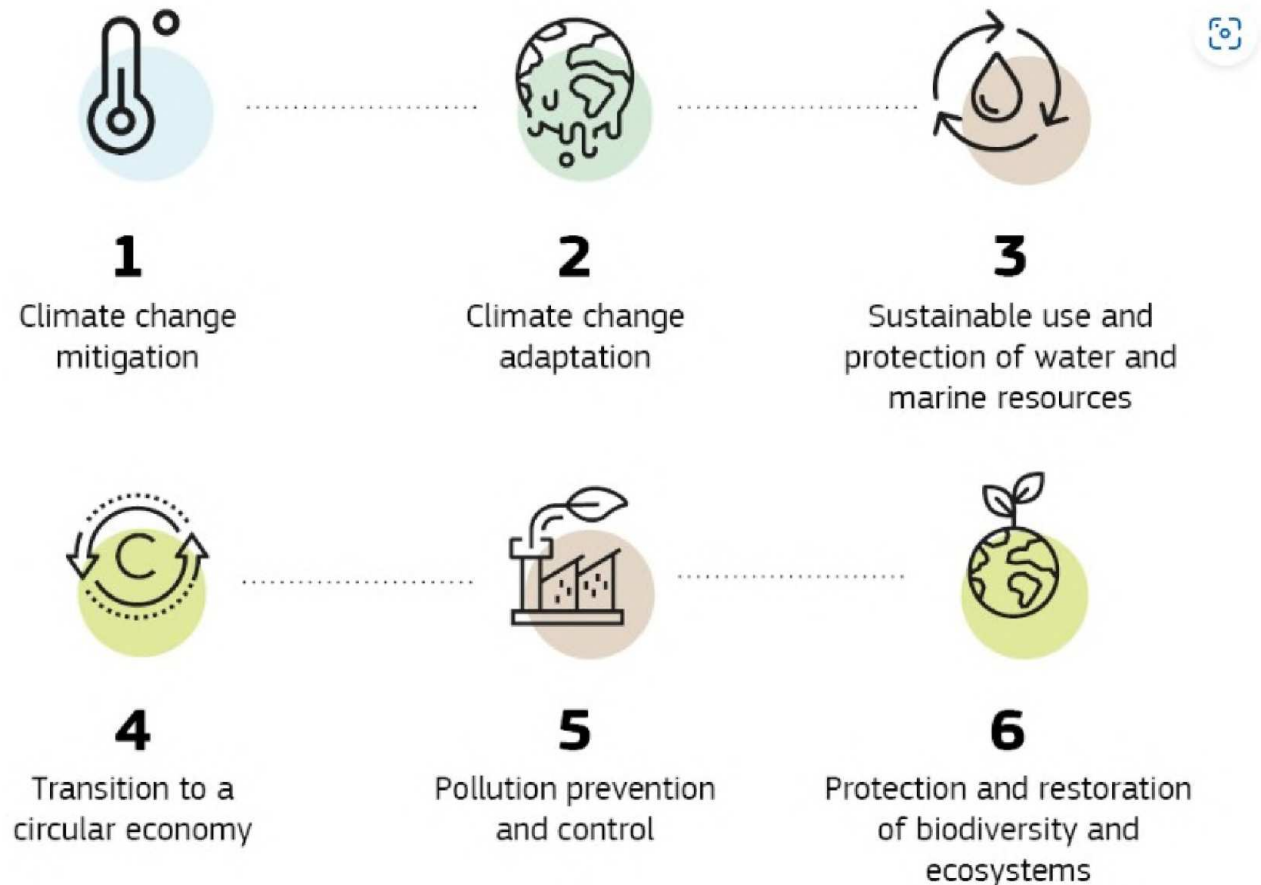
**Technical
Screening
Criteria**

EU Taxonomy for sustainable activities

Purpose:

- incentivise direct investments towards “sustainable” economic activities
- create objective and transparent criteria for financial institutions to report on the sustainability of their portfolios

 Mitigate market fragmentation, create security for investors



EU Taxonomy: background

https://finance.ec.europa.eu/sustainable-finance/tools-and-standards/eu-taxonomy-sustainable-activities_en

Environmental DA: Annex II (Transition to a circular economy)

| | | |
|------|---|----|
| 1. | Manufacturing | 2 |
| 1.1. | Manufacture of plastic packaging goods | 2 |
| 1.2. | Manufacture of electrical and electronic equipment | 7 |
| 2. | Water supply, sewerage, waste management and remediation activities | 16 |
| 2.1. | Phosphorus recovery from waste water | 16 |
| 2.2. | Production of alternative water resources for purposes other than human consumption | 17 |
| 2.3. | Collection and transport of non-hazardous and hazardous waste | 19 |
| 2.4. | Treatment of hazardous waste | 22 |
| 2.5. | Recovery of bio-waste by anaerobic digestion or composting | 25 |
| 2.6. | Depollution and dismantling of end-of-life products | 27 |
| 2.7. | Sorting and material recovery of non-hazardous waste | 30 |
| 3. | Construction and real estate activities | 32 |
| 3.1. | Construction of new buildings | 32 |
| 3.2. | Renovation of existing buildings | 37 |
| 3.3. | Demolition and wrecking of buildings and other structures | 41 |
| 3.4. | Maintenance of roads and motorways | 44 |
| 3.5. | Use of concrete in civil engineering | 46 |
| 4. | Information and communication | 50 |
| 4.1. | Provision of IT/OT data-driven solutions | 50 |
| 5. | Services | 55 |
| 5.1. | Repair, refurbishment and remanufacturing | 55 |
| 5.2. | Sale of spare parts | 58 |
| 5.3. | Preparation for re-use of end-of-life products and product components | 60 |
| 5.4. | Sale of second-hand goods | 63 |
| 5.5. | Product-as-a-service and other circular use- and result-oriented service models | 67 |
| 5.6. | Marketplace for the trade of second-hand goods for reuse | 69 |

Legal texts:

https://finance.ec.europa.eu/publications/sustainable-finance-package-2023_en

Study 'Measuring the application of circular approaches'

Study aimed to identify to what extent companies in the construction ecosystem are applying circular approaches in practice

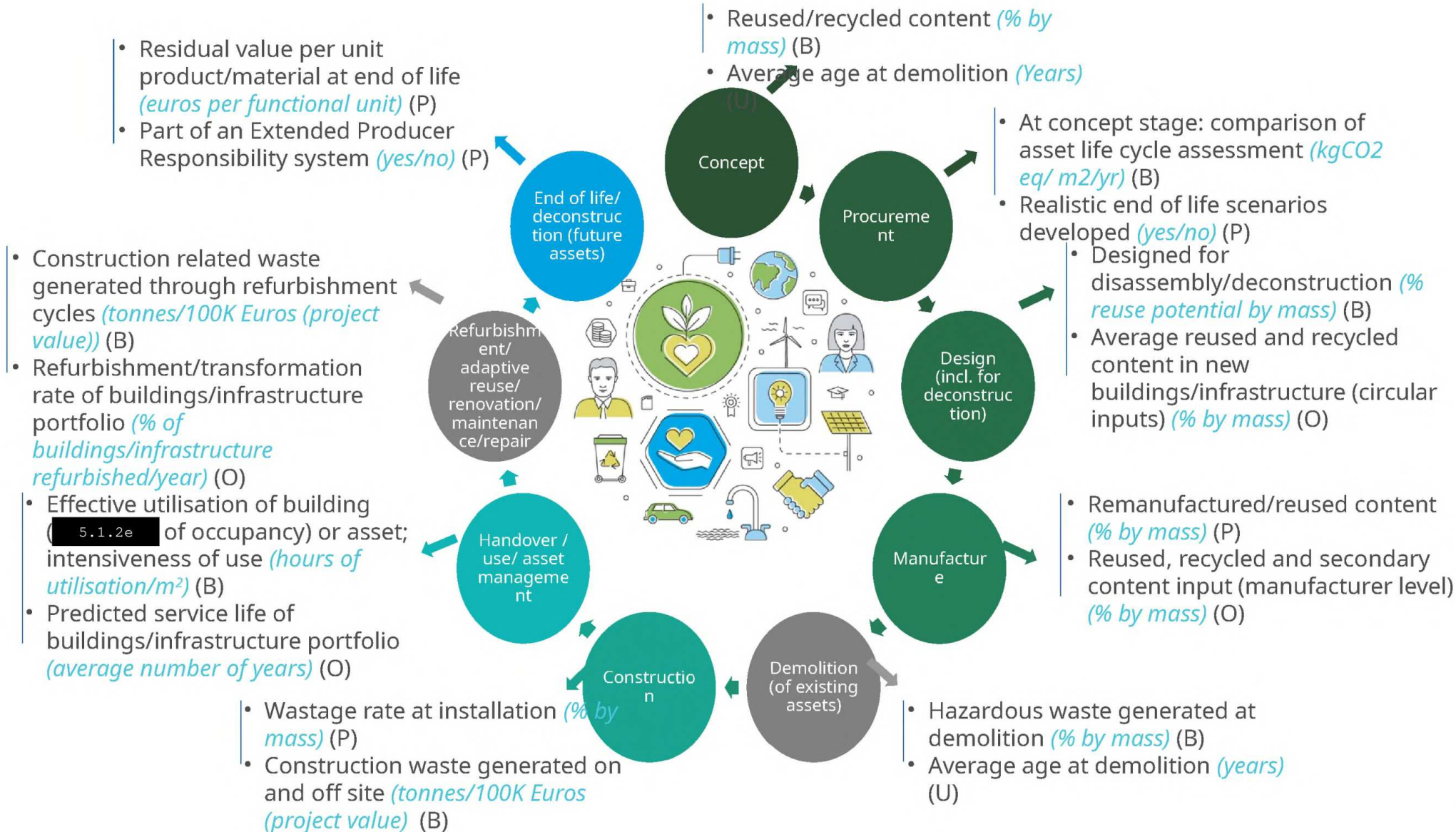
- A majority of companies (70%) are applying circular approaches.
- Only a minority (38%) are measuring this.
- Recommended 19 indicators to measure circularity in construction
- Drivers and barriers to measurement identified.

Final study report: <https://europa.eu/!fJdBhh>

Annexes: <https://europa.eu/!qHKTfc>



Study 'Measuring the application of circular approaches'



Indicator level of application:

P: Product level
B: Building/asset level
O: Organisational level
U: Urban level

The two stages in grey are not necessarily a part of the ecosystem – as they might occur or not.

EU Construction & Demolition Waste Management Protocol

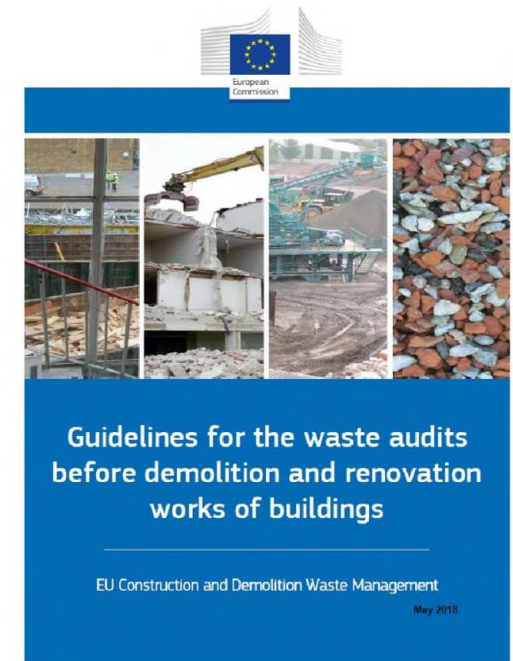
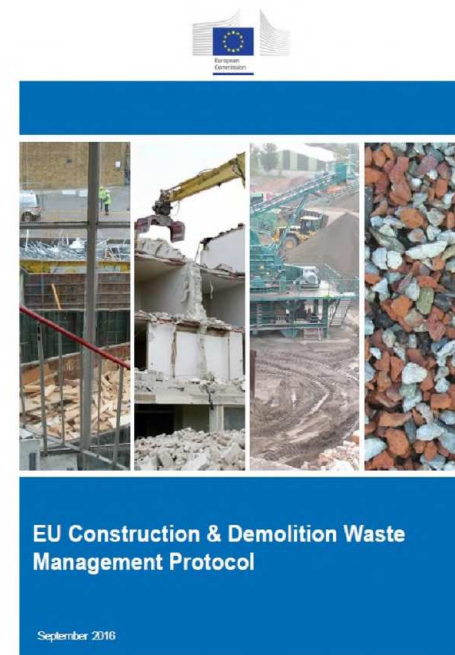
EU CDW Management Protocol (2016)

Guidelines for waste audits (2018)

Voluntary guidance documents ([link](#)), now being revised and updated

Revision now underway. It will aim to reflect recent policies (e.g. CEAP, Taxonomy, CPR), technical developments

Collaboration/co-creation with Member States and stakeholders expected during 2023-2024



Thank You! Merci! Gracias! Diolch!

https://single-market-economy.ec.europa.eu/sectors/construction_en

 EU Construction Ecosystem



Except where otherwise noted, this presentation is © European Union and is licensed under the CC BY 4.0 license.



Indicators for circularity in Nijmegen

European Green Capitals: unlocking the power of indicators for the circular future cities

Brussels, 12 October 2023

5.1.2e

5.1.2e

Nijmegen

Oldest city of the Netherlands

180.000 inhabitants

Radboud and HAN University

Vibrant, social and green

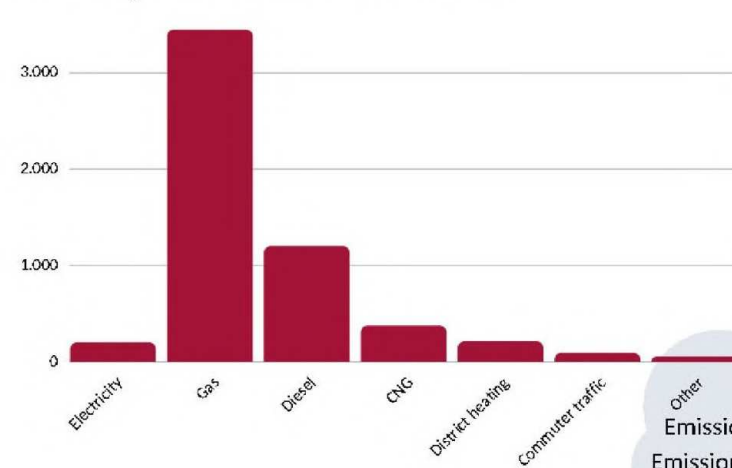
European Green Capital 2018

View on Circularity

- Sustainability consists of Climate + Circularity + Biodiversity
 - Climate involves Energy and Adaptation,
 - Biodiversity relates to Ecology and Nature,
 - Circularity = Zero waste & zero raw materials
- Earth Overshoot Day: August 2, 2023

Indicators in Nijmegen (CO2)

CO₂ emissions 2022 (5,574 ton)



2019
Emissions group 1: 6,215.3 tonnes
Emissions group 2: 13,082.5 tonnes
Commuter traffic: 90.4 tonnes

2020
Emissions group 1: 5,419.2 tonnes
Emissions group 2: 9,510.4 tonnes
Commuter traffic: 64.3 tonnes

2021
Emissions group 1: 5,465.8 tonnes
Emissions group 2: 1,534 tonnes
Commuter traffic: 50.9 tonnes

Emissions group 1 comprises emissions resulting from the use of gas and fuels. Emissions group 2 comprises emissions resulting from the use of electricity and district heating. The CO₂ emissions of DAR, MGR and ODRN have also been taken into account. Commuter traffic comprises the kilometres driven during work hours by public transit, private vehicles and aeroplanes.

Objective:

By the end of 2024, the Municipality of Nijmegen aims for 70% fewer CO₂ emissions than in 2019.

To make this a reality, we are focusing on:

- Procuring sustainably generated electricity
- Improving the sustainability of our buildings, for instance by insulating them and installing solar panels
- Creating a more environmentally friendly vehicle fleet
- Procuring equipment and machines that are more environmentally friendly

We always work together with others towards a sustainable future.

Thanks to improvements, the figures may show slight differences compared to previously published figures.



Circularity indicators in Nijmegen

- Waste management
 - Residual waste production: from 151kg (2010) to 107kg.
 - Waste separation: from 62% (2010) to 73%
- Construction / building sector
 - GPR (residential)
 - MPG (environmental performance)
 - Circular Impact Ladder

Circular Impact Ladder

- Developed by the Arnhem-Nijmegen Green Metropolitan Region
 - Less than 10% of current residential construction is circular
 - Overall 30% is attainable with targeted advice
 - For new residential projects, 60-90% circularity is possible
- Conceptual Circular Building Program
 - Construction is responsible for 30-40% of primary raw material usage
 - 30-40% waste production (10-30% CO2 emissions)

How does it work

| | | | | | |
|----------------------|----------------|----------------------|------------|-------------------------|---|
| Input materiaalstaat | Input herkomst | Input toekomstwaarde | Resultaten | Generieke materiaaldata | + |
|----------------------|----------------|----------------------|------------|-------------------------|---|

2. Scrol naar beneden totdat u rijen met 'Zelf toe te voegen materiaal' ziet staan

| | | | | |
|----------------------------------|----|----|----|------|
| Zandcement | 0% | 0% | 0% | 100% |
| Zink | 1% | 0% | 0% | 99% |
| "Zelf toe te voegen materiaal" 1 | | | | |
| "Zelf toe te voegen materiaal" 2 | | | | |
| "Zelf toe te voegen materiaal" 3 | | | | |
| "Zelf toe te voegen materiaal" 4 | | | | |
| "Zelf toe te voegen materiaal" 5 | | | | |
| "Zelf toe te voegen materiaal" 6 | | | | |

3. Vervang de tekst 'Zelf toe te voegen materiaal' naar de naam van de nieuwe materiaalsoort die u wilt toevoegen

4. Vul de juiste herkomst- en toekomstwaarde percentages in die op de nieuwe materiaalsoort van toepassing zijn

| | | | | |
|----------------------------------|-----|-----|----|------|
| Zandcement | 0% | 0% | 0% | 100% |
| Zink | 1% | 0% | 0% | 99% |
| Voorbeeld 1 handleiding | 75% | 25% | 0% | 0% |
| "Zelf toe te voegen materiaal" 2 | | | | |
| "Zelf toe te voegen materiaal" 3 | | | | |
| "Zelf toe te voegen materiaal" 4 | | | | |
| "Zelf toe te voegen materiaal" 5 | | | | |
| "Zelf toe te voegen materiaal" 6 | | | | |

5. Ga naar het tabblad 'input materiaalstaat'

6. Ga naar veld (1) productinformatie referentiegebouw

Legenda toegepaste uitzonderingsgrondslagen

In dit document zijn gedeeltes geanonimiseerd op grond van artikel 5 van de Wet open overheid:

Art. 5.1 lid 2 onderdeel e

De eerbiediging van de persoonlijke levenssfeer, tenzij de betrokken persoon instemt met openbaarmaking

Pagina('s): 2 5 6 18 21